

Differenzia con Asia Napoli



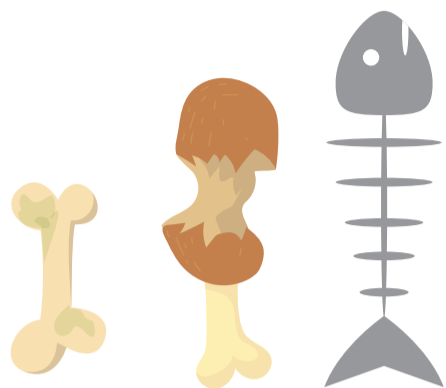
Guida alla corretta raccolta differenziata

....

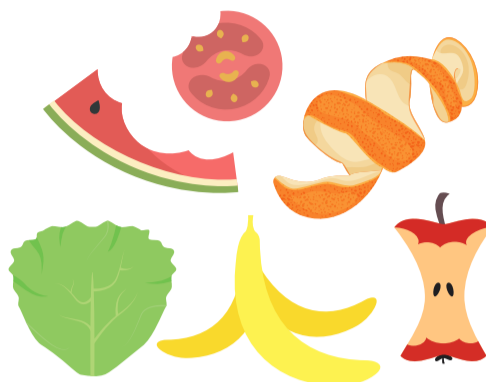
Guidelines for proper waste separation

Progetto cofinanziato dal Fondo europeo di sviluppo regionale

Umido / Wet waste



Avanzi di cucina e di cibo
(eliminando liquidi in eccesso).
Kitchen and organic waste
(except for excess fluids).



Verdure, avanzi e bucce di frutta.
Vegetables, fruit leftovers and peels.



Gusci di frutti di mare.
Seafood shells.



Cartoni di pizza con residui di cibo.
Pizza boxes with food residues.



Alimenti avariati senza confezioni.
Damaged food without packaging.

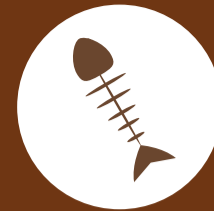


Fazzoletti di carta unti
(scottex, tovaglioli).
Greasy paper handkerchiefs
(paper towels, napkins).

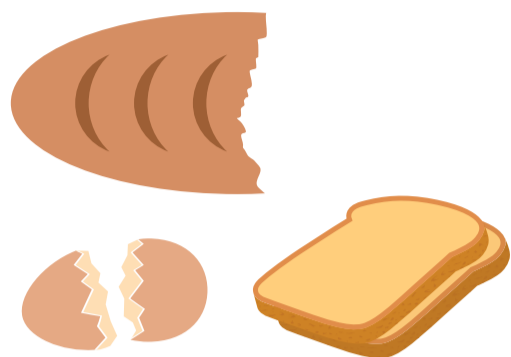


Usare sacchi compostabili.
Use compostable bags.



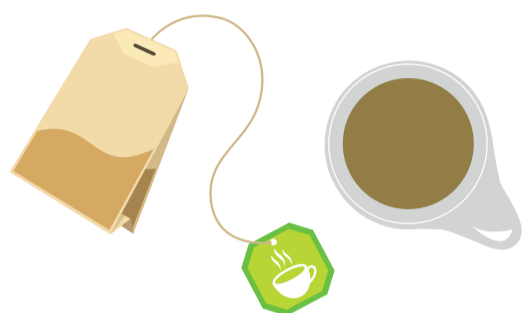


UMIDO
WET WASTE



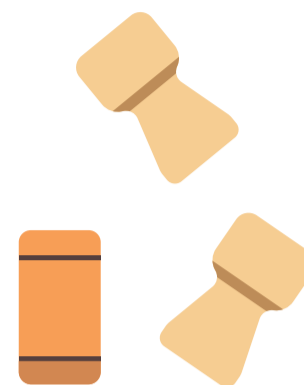
Gusci d'uovo, pane.

Eggshells, bread.



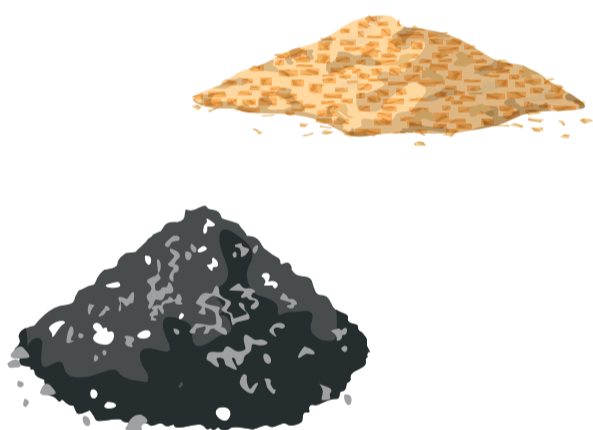
**Fondi di caffè e cialde
in carta, filtri di the e
tisane.**

*Coffee grounds and paper
pods, tea and infusion bags.*



Tappi di sughero.

Cork stoppers.



**Segatura,
cenere di legna.**

*Sawdust, wood
ashes.*



**Foglie, fiori e piante da
appartamento, terriccio
dei travasi.**

*Leaves, flowers, and indoor
plants, potting soil.*

Non mettere nessun oggetto in plastica.

Do not throw any plastic object.

CARTA
PAPER

VETRO
GLASS PACKAGING

PLASTICA E METALLI
PLASTIC AND METAL

NON RICICLABILE
NON-RECYCLABLE

ISOLE ECOLOGICHE
WASTE COLLECTION
SITES

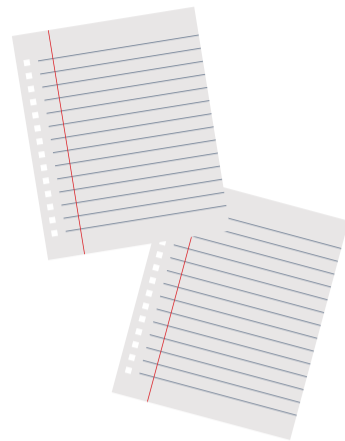
CATEGORIE DEI MATERIALI
MATERIALS
CLASSIFICATION

Carta / Paper



**Quaderni, libri,
buste da lettera.**

*Notebooks, books,
envelopes.*



Fogli di carta.

Paper sheets.



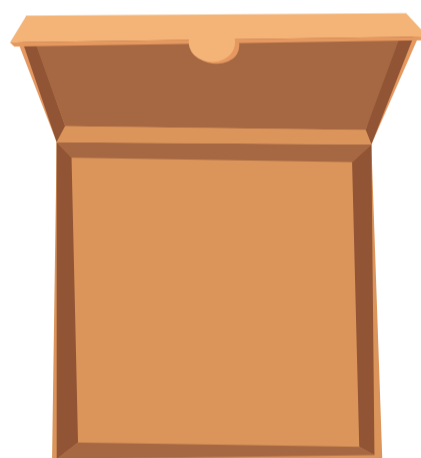
Sacchetti di carta.

Paper bag.



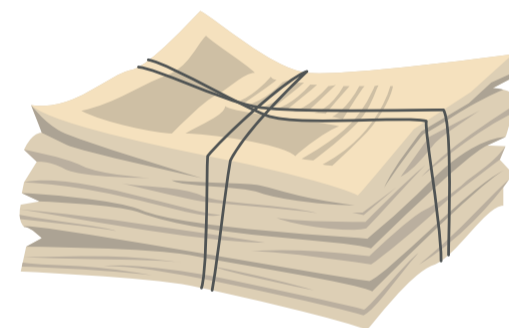
Scatole.

Boxes.



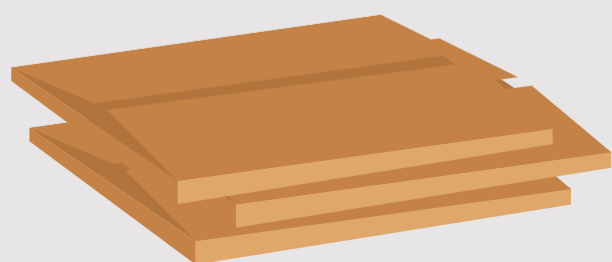
**Cartoni di pizza senza
residui di cibo.**

*Pizza boxes without
food residues.*



Giornali, riviste.

*Newspapers,
magazines.*



**Riduci l'ingombro di scatole
e scatoloni, piegandoli.**

*Save space, fold boxes
and cartons.*



Scatole per alimenti

(anche se contengono finestre di plastica).

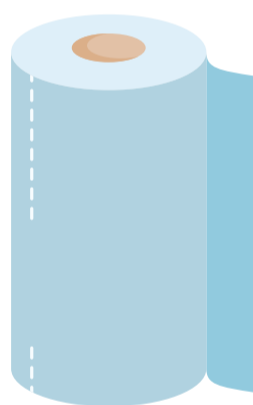
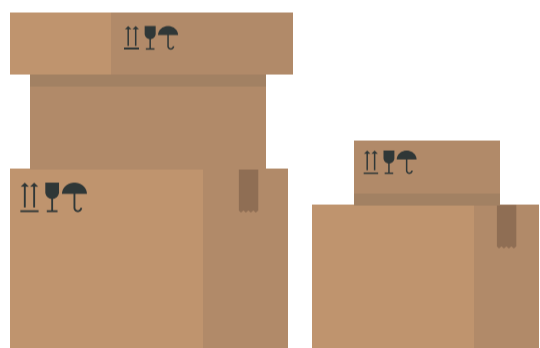
*Food boxes
(even if they contain plastic windows).*

Confezioni in carta e cartoncino per giocattoli e abbigliamento.

Paper and cardboard packaging for toys and clothes.

Confezioni in tetrapak.

Tetrapak packaging.



Cartoni di provenienza domestica

(imballaggi di TV, computer, etc.).

*Household packaging
(TV, computer packaging, etc.)*

Carta asciugamani.

Paper towels.

Carta da regalo.

Wrapping paper.

CARTA
PAPER

VETRO
GLASS PACKAGING

PLASTICA E METALLI
PLASTIC AND METAL

NON RICICLABILE
NON-RECYCLABLE

ISOLE ECOLOGICHE
WASTE COLLECTION
SITES

CATEGORIE DEI MATERIALI
MATERIALS
CLASSIFICATION

Imballaggi in Vetro

/ Glass packaging



Bottiglie.

Bottles.



Bottiglie rotte.

Broken bottles.



Lastre di vetro.

Glass sheets.



Tazze e tazzine.

Mugs and cups.



Svuotare gli imballaggi in vetro e metterli sfusi nei contenitori verdi per la raccolta differenziata.
Empty the glass packaging and throw it loose in the green containers for glass separate waste.



**Bottigliette
per bibite.**

*Bottles
for drinks.*



Barattoli.

Jars.



Vasetti.

Small jars.



Bicchieri.

Glasses.



Pirofile.

Ovenware.



Piatti.

Dishes.

VETRO
GLASS PACKAGING

PLASTICA E METALLI
PLASTIC AND METAL

NON RICICLABILE
NON-RECYCLABLE

ISOLE ECOLOGICHE
WASTE COLLECTION
SITES

CATEGORIE DEI MATERIALI
MATERIALS
CLASSIFICATION

Imballaggi in Plastica e Metalli

/ Plastic and metal packaging



**Bottiglie e flaconi
in plastica,
buste in plastica.**

*Plastic bottles and
containers, plastic bags.*



**Confezioni e vaschette
monouso in plastica o
polistirolo per alimenti.**

*Single-use plastic
or polystyrene
food packaging and trays.*



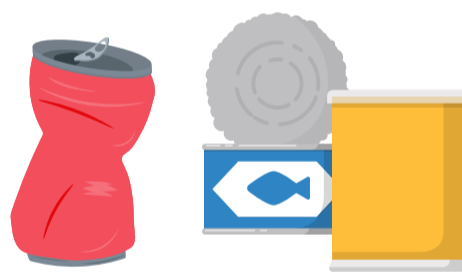
**Piatti, bicchieri e
bicchierini da caffè
in plastica
anche sporchi.**

*Dishes and glasses
in plastic
even dirty.*



**Caffettiere, pentole,
padelle in metallo.**

*Metal coffeemakers, pots,
pans.*



**Lattine per bevande,
barattoli per conserve
alimentari.**

*Beverage cans and jars
for food preserves.*



**Bombolette spray
non pericolose**

(non etichettate T e F).

*Non-hazardous spray
cans
(not labeled T and F).*



**Piatti e bicchieri in plastica possono
essere anche sporchi ma svuotati
di ogni residuo.**

*Dishes and glasses can be thrown
here even if dirty, provided there are
no residues.*



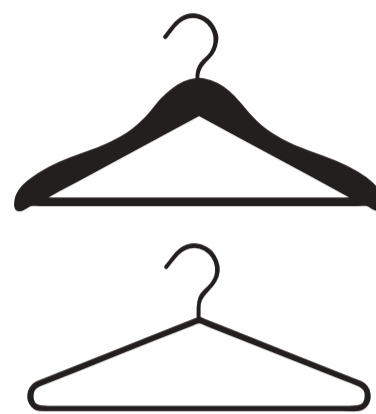
Coperchi, fogli e vaschette monouso di alluminio.

Single-use aluminium lids, sheets and trays.



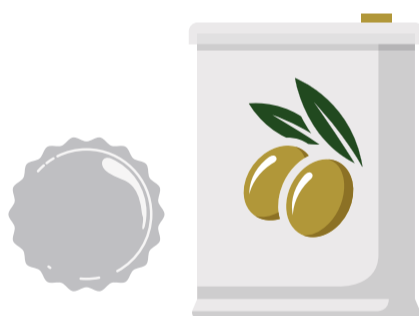
Tubetti vuoti, chiavi, lucchetti e catene, posate in metallo.

Empty tubes, keys, padlocks, chains and metal cutlery.



Grucce in plastica o metallo per abiti.

Plastic or metal clothes hangers.



Latta e lattine per olio, tappi.

Oil tins and cans, stoppers.



Pellicole per alimenti, scatole in metallo.

Food film, metal boxes.

PLASTICA E METALLI
PLASTIC AND METAL

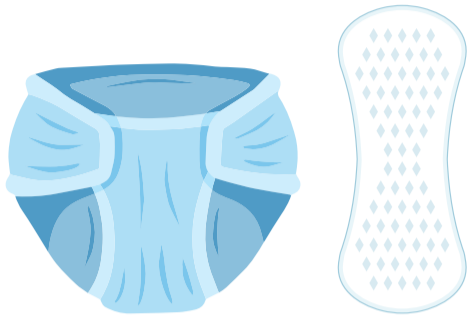
NON RICICLABILE
NON-RECYCLABLE

ISOLE ECOLOGICHE
WASTE COLLECTION
SITES

CATEGORIE DEI MATERIALI
MATERIALS
CLASSIFICATION

Non riciclabile / Non-recyclable

Tutto ciò che non può essere recuperato:



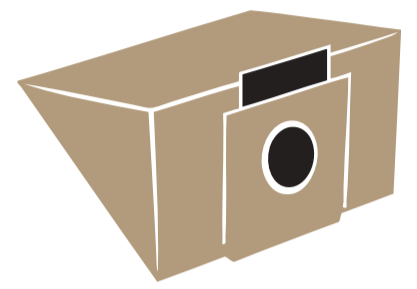
Pannolini e assorbenti.

*Sanitary diapers
and towels.*



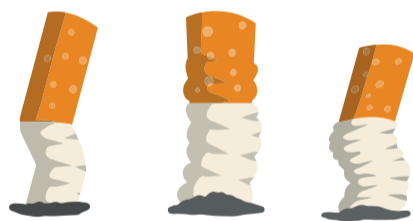
Lettiere per animali domestici.

Pet litters.



Sacchi per aspirapolvere.

*Vacuum
cleaner bags.*



Mozziconi di sigarette.

Cigarette butts.



CD, DVD, videocassette VHS, musicassette.

*CDs, DVDs, VHS
tapes, cassettes.*



Penne, pennarelli, rasoi, accendini.

Pens, markers, razors, lighters.

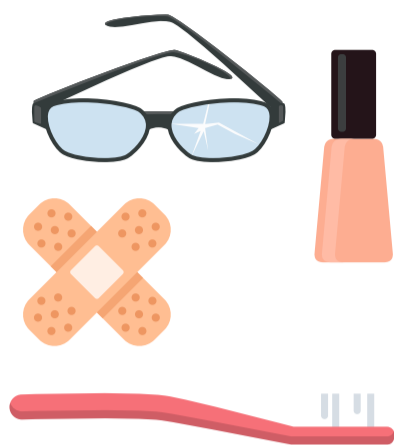


Riduci il consumo dei materiali non riciclabili differenzia tutto il resto.

Reduce the consumption of non-recyclables, separate the rest.

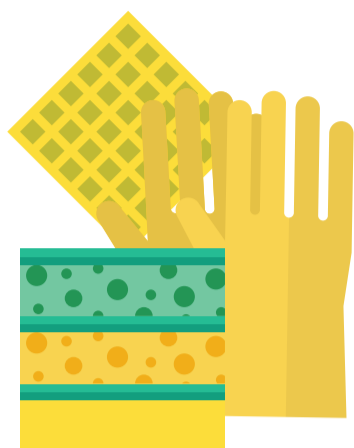


Whatever cannot be recycled:



Spazzolini, cerotti, occhiali, cosmetici

(rossetti, smalti, ecc).
Toothbrushes, plasters, glasses, cosmetics (lipsticks, nail polishes, etc.).



Stracci, spugne, guanti in lattice.

Rags, sponges, latex gloves.



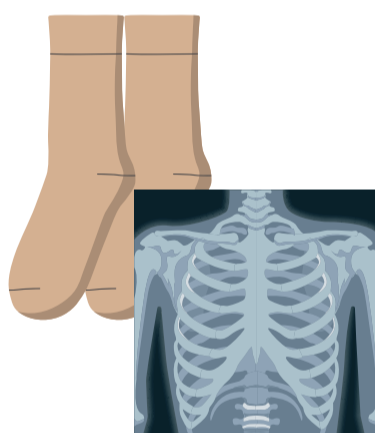
Cocci di piatti in ceramica.

Shards of ceramic dishes.



Candele, nastri da festa e festoni.

Candles, party decorations and festoons.



Lastre radiografiche, calze in nylon.

Radiographic films, nylon stockings.



Carta fotografica, carta da forno, scontrini fiscali.

Photographic paper, baking paper, fiscal receipts.

NON RICICLABILE
NON-RECYCLABLE

ISOLE ECOLOGICHE
WASTE COLLECTION
SITES

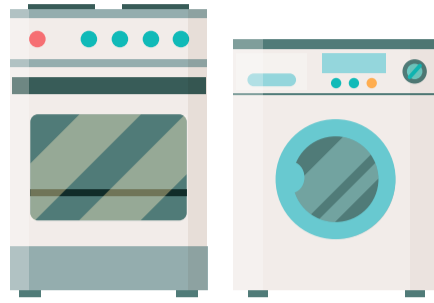
CATEGORIE DEI MATERIALI
MATERIALS
CLASSIFICATION

Isole ecologiche e ecopunti di Asia

/ Asia waste collection sites and points



Frigoriferi e condizionatori.
Fridges and air conditioners.



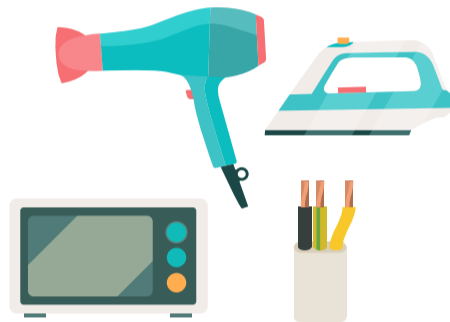
Grandi elettrodomestici.
Large household appliances.



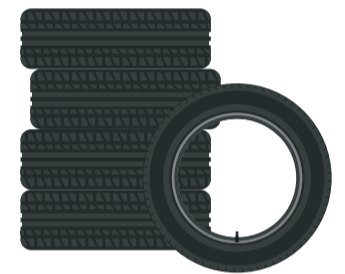
Piatti e ceramiche.
Dishes and pottery.



Lastre e vetrocamere.
Glass sheets and insulating glasses.



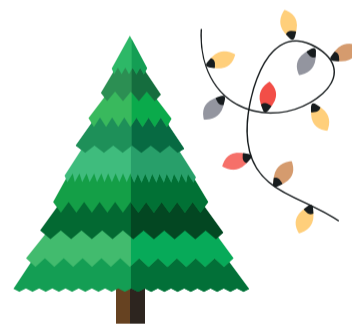
Piccoli elettrodomestici, cavi elettrici.
Small household appliances, electric cables.



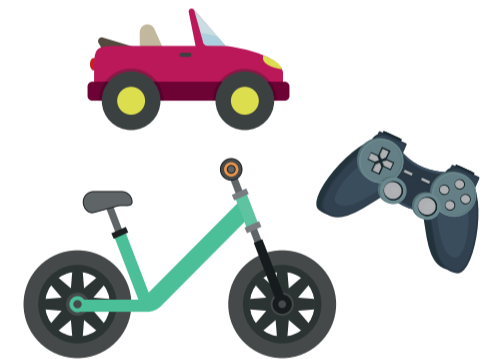
Pneumatici.
Tyres.



Ingombranti.
Bulky waste.



Alberi e luci di Natale.
Christmas trees and lights.



Giocattoli.
Toys.



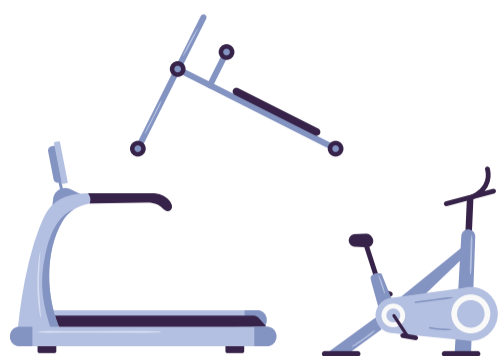
Sfalci e potature.
Cutting and pruning waste.



Imballaggi in cartone.
Cardboard packaging.



Farmaci.
Medicines.



Attrezzi ginnici.

*Gym tools
(treadmills, exercise
bikes, benches).*



Imballaggi in plastica.

Plastic packaging.



Imballaggi in metallo.

Metal packaging.



Grandi oggetti in plastica.

Large plastic objects.



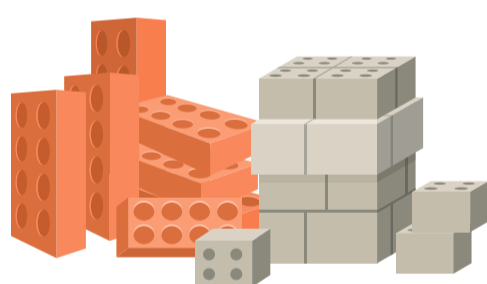
Olii minerali.

Mineral oils.



Olii vegetali.

Vegetable oils.



Inerti

(piccole quantità di scarti di lavori).

Inert materials

*(small quantities of waste materials from
construction works).*



TV - monitor.

TV - monitors.



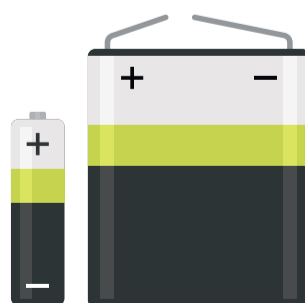
Indumenti usati.

Used clothing.



Toner, cartucce, vernici e solventi.

*Toners, cartridges,
paints and solvents.*

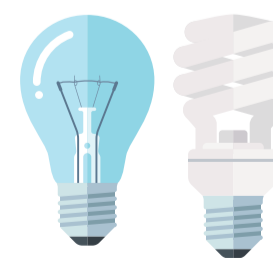


Pile, Accumulatori

(Batterie auto)

Batteries, accumulators.

(Car batteries)



Lampadine e neon.

*Light bulbs and
neon lights.*

Categorie dei materiali

/ Materials classification

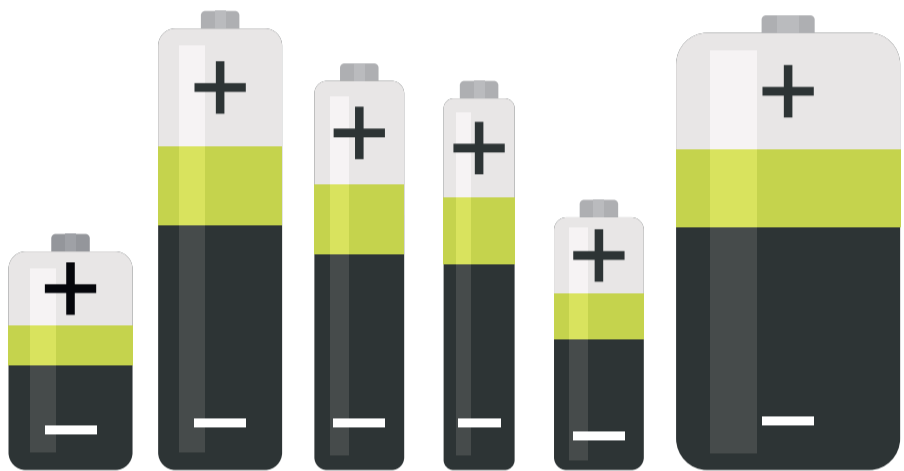
Materiali che si possono portare

.....
Materials which can be thrown:

Accumulatori (batterie auto)	<i>Accumulators (Car batteries)</i>
Attrezzi ginnici	<i>Gym tools</i>
Farmaci	<i>Medicines</i>
Frigoriferi e Condizionatori	<i>Fridges and air conditioners</i>
Giocattoli	<i>Toys</i>
Grandi Elettrodomestici	<i>Large household appliances</i>
Imballaggi in Cartone	<i>Cardboard packaging</i>
Imballaggi in Plastica e Metalli	<i>Plastic and metal packaging</i>
Indumenti usati	<i>Used clothing</i>
Inerti (Piccole quantità di scarti di lavori)	<i>Inert materials (Small amounts of work waste)</i>
Ingombranti	<i>Bulky materials</i>
Lampadine e neon	<i>Light bulbs and neon lights</i>
Lastre e vetro camera	<i>Glass sheets and insulating glasses</i>
Oli Minerali	<i>Mineral oils</i>
Oli Vegetali	<i>Vegetable oils</i>
Piccoli Elettrodomestici	<i>Small household appliances</i>
Pile	<i>Batteries</i>
Pneumatici	<i>Tyres</i>
Sfalci e Potature	<i>Cutting and pruning waste</i>
Toner e Cartucce	<i>Toners and cartridges</i>
TV-Monitor e PC	<i>TV monitors and PCs</i>
Vernici e Solventi	<i>Paints and solvents</i>

Isole ecologiche <i>Waste collection sites</i>	Isole ecologiche ridotte <i>Reduced-services waste collection site</i>	Ecopunto ingombranti <i>Bulky waste collection point</i>	Ecopunto Elettrodomestici <i>Household appliances collection point</i>	Oli Vegetali <i>Vegetable oils collection point</i>
●				
●	●	●		
●	●	●		
●		●		
●	●	●		
●	●			
●	●			
●	●			
●	●			
●	●			
●	●	●		
●				
●	●	●		
●	●			
●	●			
●	●			●
●	●	●	●	
●	●		●	
●	●			
●	●			
●	●			
●			●	
●				
●				

Pile / Batteries



Pile usate e batterie esauste sono considerate rifiuti speciali pericolosi. NON BUTTARLE MAI NEL NON RICICLABILE. Conferiscile nell'apposito contenitore stradale o presso le isole ecologiche.

Used batteries are considered as hazardous special waste. NEVER THROW THEM AS NON-RECYCLABLE WASTE. Throw them in the special road containers or at the waste collection sites.

Indumenti usati / Used clothing



Abiti, coperte, scarpe, cinture, borse e valigie, pupazzi in peluche. Gli indumenti usati devono essere depositati in buste ben chiuse nell'apposito contenitore stradale degli abiti usati o portali alle isole ecologiche.

Clothes, blankets, shoes, belts, bags and suitcases, puppets. Used clothing must be thrown in closed bags in the special road container for used clothing or at the waste collection sites.

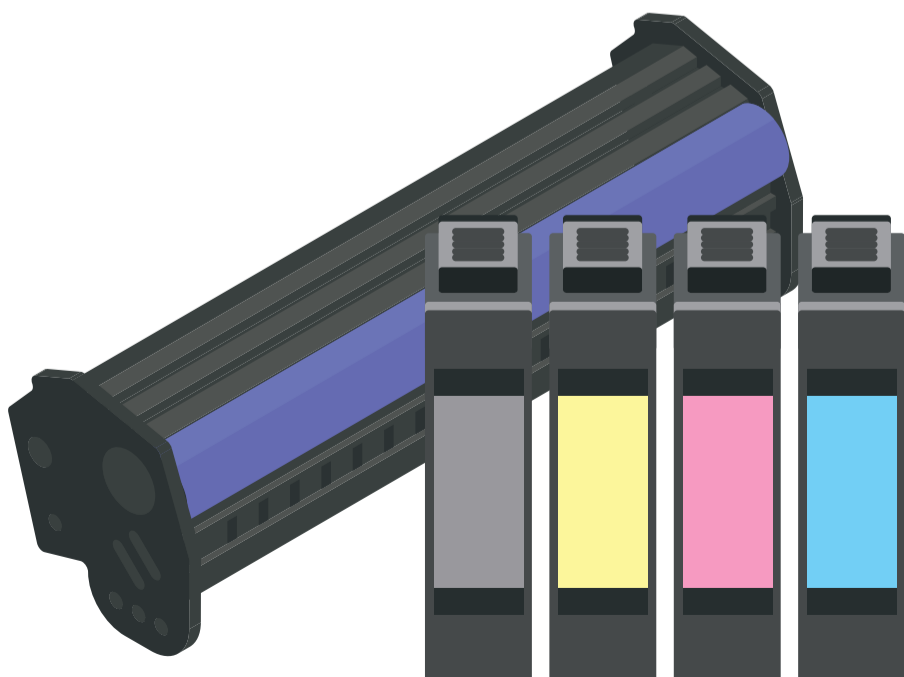
Farmaci / Medicines



I farmaci devono essere depositati nell'apposito contenitore presente in tutte le farmacie o nelle isole ecologiche. NON BUTTARE MAI I FARMACI NEL NON RICICLABILE O NELL'ORGANICO.

*Medicines must be thrown in the special containers located in pharmacies or at the waste collection sites
NEVER THROW MEDICINES AS NON-RECYCLABLE OR WET WASTE.*

Toner e cartucce / Toners and cartridges



Toner e cartucce per stampanti, possono essere conferiti presso le Isole Ecologiche Complete, aree attrezzate per la raccolta e l'avvio al recupero di rifiuti consegnati gratuitamente dai cittadini.

Toners and cartridges for printers can be thrown at full-services waste collection sites, areas equipped for the collection and initial recovery of the waste thrown by citizens.

Isole ecologiche

Waste collection sites



**PISCINOLA
COLLI AMINEI
SCAMPIA**

**PONTICELLI
PIANURA**

**ORARIO DI APERTURA
OPENING HOURS**

Via Giovanni Antonio Campano - Piscinola

Via Saverio Gatto - Colli Aminei

Viale della Resistenza - Scampia

Via Emilio Salgari - Ponticelli

Lunedì 14.00 - 19.00

da Martedì a Sabato

8.00 - 19.00

Domenica 8.00 - 14.00

Monday 2pm - 7pm

From Tuesday to Saturday

8am - 7pm

Sunday 8am - 2pm

Via Nelson Mandela - Pianura

(Polo artigianale) (Handcraft hub)

da Lunedì a Sabato 14.00 - 19.00

From Monday to Saturday

2pm - 7pm

Isole ecologiche ridotte

Reduced-services waste collection sites



**BARRA
FUORIGROTTA
SECONDIGLIANO**

**MERCATO
SANITÀ**

**ORARIO DI APERTURA
OPENING HOURS**

Via Mastellone - Barra

Via Arturo Labriola - Fuorigrotta (Cinema Med)

Via Vicinale Vallone di Miano - Secondigliano (Dietro Cupa Capodichino)

Viale Ponte della Maddalena - Mercato

Via Arena alla Sanità - Sanità

Lunedì 14.00 - 19.00

da Martedì a Sabato

8.00 - 19.00

Domenica 8.00 - 14.00

Monday 2pm - 7pm

From Tuesday to Saturday

8am - 7pm

Sunday 8am - 2pm

Ecopunto Oli vegetali esausti

*Waste vegetable oils
collection point*



**Verifica il calendario mensile delle soste sul sito
www.asianapoli.it o sull'APP.**

*Go to www.asianapoli.it or download the app
to look at the monthly calendar.*

Ecopunto ingombranti

Bulky waste collection point



**Verifica il calendario settimanale sul sito
www.asianapoli.it o sull'APP.**

*Go to www.asianapoli.it or download the app
to look at the weekly calendar.*

Ecopunto Elettrodomestici

Eco point for domestic appliances



**Verifica il calendario settimanale sul sito
www.asianapoli.it o sull'APP.**

*Go to www.asianapoli.it or download the app
to look at the weekly calendar.*

DIFFERENZIA PURE TU!

L'APP PER LA TUA RACCOLTA DIFFERENZIATA

START SEPARATING! THE APP FOR YOUR WASTE SEPARATION

INFORMATI E RESTA INFORMATO

La APP di ASIA per i servizi al cittadino: news informazioni sui servizi, sulla raccolta differenziata, sui calendari e tanti altri contenuti.

SCARICA L'APP DI ASIA NAPOLI

STAY UP-TO-DATE

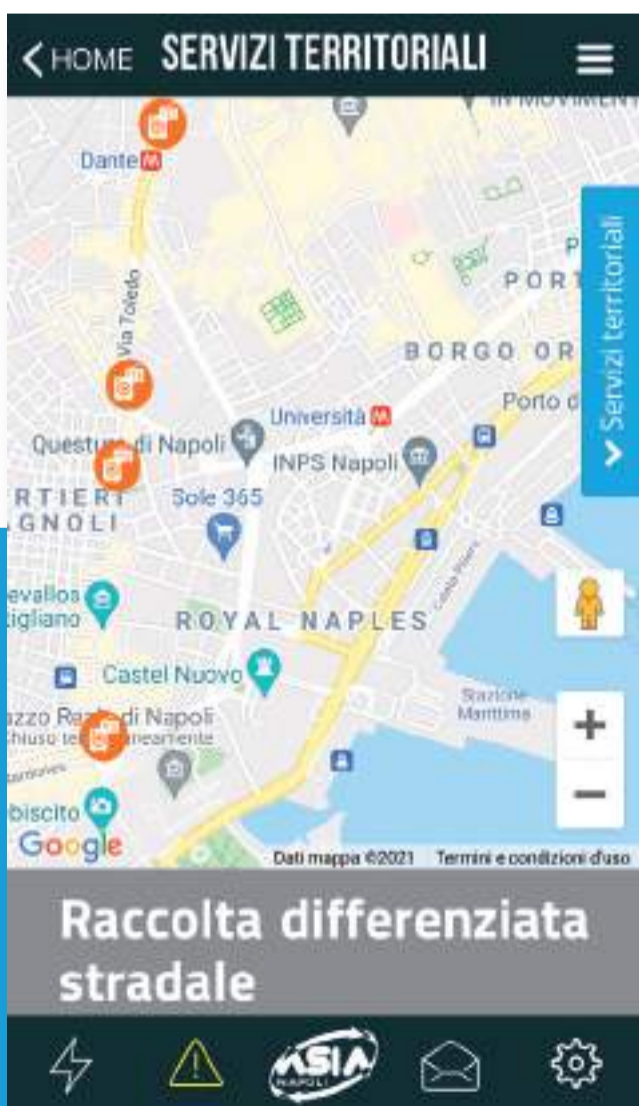
ASIA's APP for citizens' service: news about services, separate waste collection, calendars and more.

DOWNLOAD ASIA NAPOLI APP

Scarica l'App o visita il sito www.asianapoli.it

Download the App or go to www.asianapoli.it





per maggiori informazioni:
www.asianapoli.it
 n°verde 800161010

For further information:
www.asianapoli.it
 Helpline 800161010





RITIRO INGOMBRANTI A DOMICILIO
BULKY WASTE TAKE-BACK SERVICE



PRENOTAZIONI / BOOKING

www.asianapoli.it / 800161010

È possibile richiedere il ritiro a piè palazzo su strada per un massimo di tre colli per volta. L'appuntamento ingombranti può essere prenotato solo ed esclusivamente dalle utenze domestiche

It is possible to book the take-back service down building for 3 parcels maximum at a time

The take-back service can be booked only and exclusively by households.

**www.asianapoli.it
800161010**